

# OPERATION MANUAL

## SV-9600 Sound & Voice Player

Before operation the unit, please read this manual thoroughly and retain it for future reference.



# Sound & Voice Player

---

## Contents




1. Unpacking and Installation	1
2. Function & Feature	2
3. Description of Front	3
4. Description of Back	4
5. Connection Diagram	5
6. Operation Software	6,7,8
7. Description	9
8. Progress Way	10,11,12
9. Specifications	13



## Unpacking and installation

Although it is neither complicated to install nor difficult to operate your emergency panel, a few minutes of your time is required to read this manual for a properly wired installation and becoming familiar with its many features and how to use them.

Please take a great care in unpacking our set and do not discard the carton and other packing materials. That may be needed when moving your set and are required if it ever becomes necessary to return your set for service. Never place the unit near radiators, in front of heating vents, excessive humid or dusty location to avoid early damage and for your years quality use. Connect your complementary component as illustrated in the following page.

 <p><b>CAUTION</b> RISK OF ELECTRIC SHOCK DO NOT OPEN</p>	 <p>This symbol is intended to alert the user to the presence of uninsulated "dangerous voltage" within the product's enclosure that may be of sufficient magnitude to constitute a risk of electric shock to persons.</p>
<p>CAUTION : TO REDUCE THE RISK OF ELECTRIC SHOCK, DO NOT REMOVE COVER (OR BACK). NO USER-SERVICEABLE PARTS IN SIDE. REFER SERVICING TO QUALIFIED SERVICE PERSONNEL.</p>	 <p>This symbol is intended to alert the user to the presence of important operation and maintenance (servicing) instructions in the literature accompanying the appliance.</p>
<p><b>WARNING</b> To prevent fire or shock hazard, do not expose the unit to rain moisture.</p>	<p>Caution : To prevent electric shock do not use this (polarized) plug with an extension cord, receptacle or other outlet unless the blades can be fully inserted to prevent blade exposure.</p> <p>Attentions : Pour prevenir les chocs electriques ne pas utiliser cette fiche polarisee avec un prolongateur, une prise de courant on une autre soruie de courant, sauf si les lames peuvent etre inserees a fond sans en laisser aucune partie a decouvert.</p>

# Function & Feature

### 1. Select occasion & Play function

Easy to select music to play on regular basis and is available immediately to play in various places. (School, Organization, Military..)

### 2. Play function of BGM

Can play to BGM with save the several sound sources file to SD-CARD.

### 3. Play function connect function of outside

Can play 10 sound sources from remote place using 10 contact points on backside

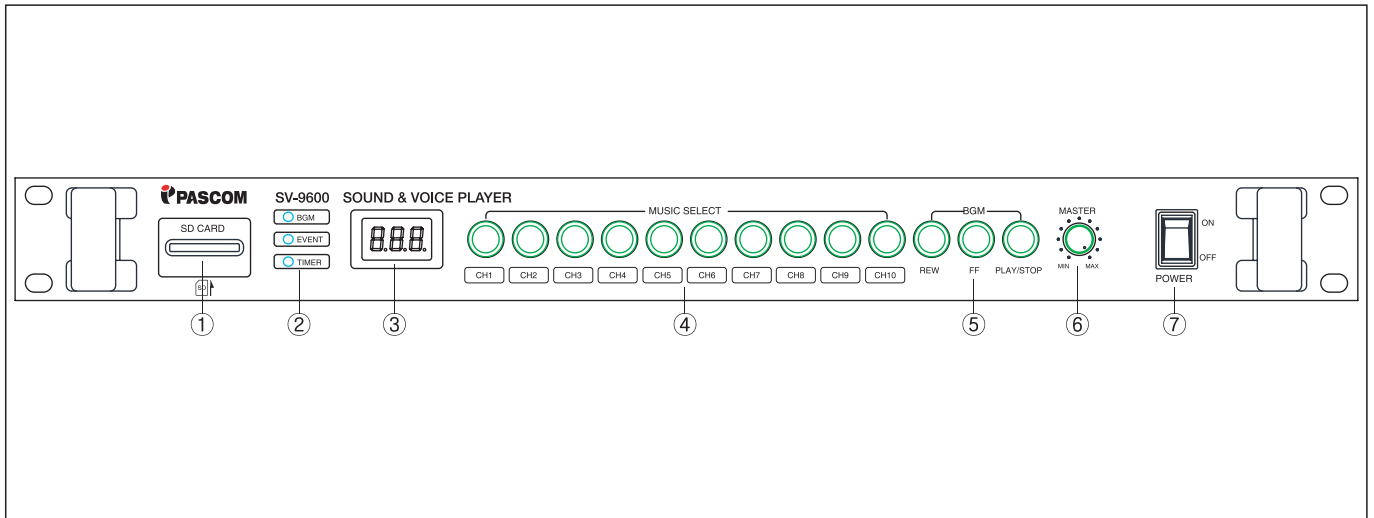
### 4. An interlocking function of program timer

Be interlock with our DPT-9600(weekly programtimer) and accomplishes Voice File function.

### 5. An interlocking function of PC

Can play sound sources on outside PC connecting RS-232.

## Description of Front



### 1. SD CARD SLOT

### 2. LED(Light Emitting Diode) DISPLAY

BGM : Use to NO.5 key.

EVENT : Play to choice of NO.4 song or use to socket in back.

TIMER : Play to DPT-9602 (Weekly Timer)

### 3. FND(Flexible Numeric Display) DISPLAY

Signs the playing song's number.

### 4. EVENT FILE SELECT BUTTON

Plays 0.1mp3~10mp3 file in "EVENT" folder of SD-card.

### 5. BGM PLAYING BUTTON

Plays files, sequently. (Maximum to 255 )

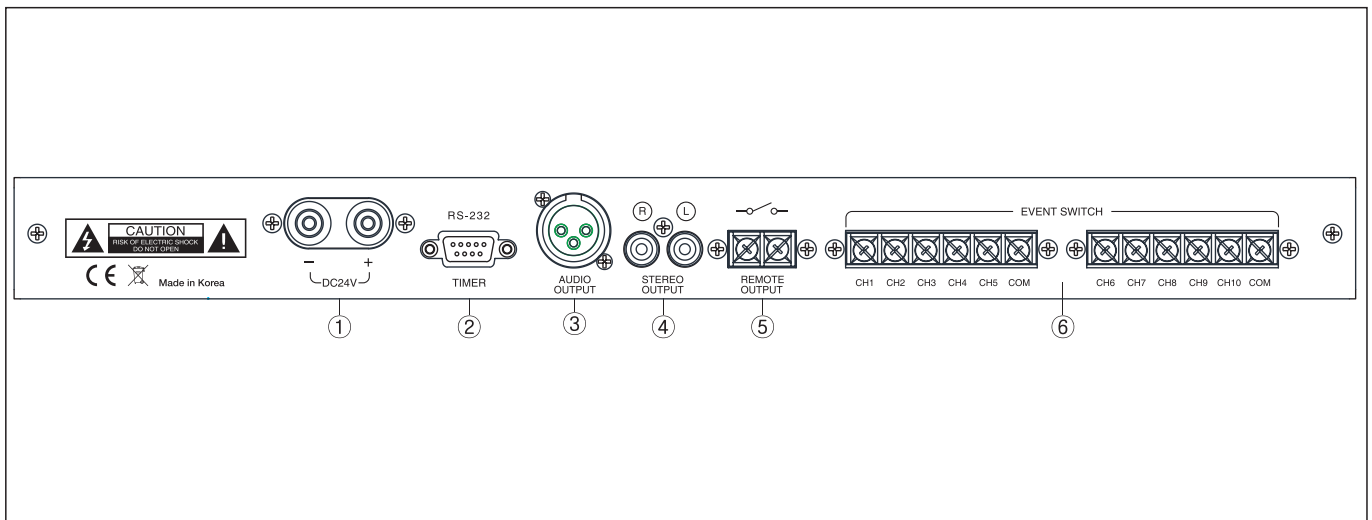
### 6. VOLUME CONTROL

Only controls Balance output, not stereo output.

### 7. POWER SWITCH

# Sound & Voice Player

## Description of Back



### 1. DC24V SUPPLY SOCKET

Permission to power of DC24V/100mA

### 2. RS-232 PROTOCOL CONNECTOR

Conect to DPT-9602(Weekly Program Timer)

### 3. AUDIO OUTPUT (BALANCED)

### 4. AUDIO OUTPUT (STEREO)

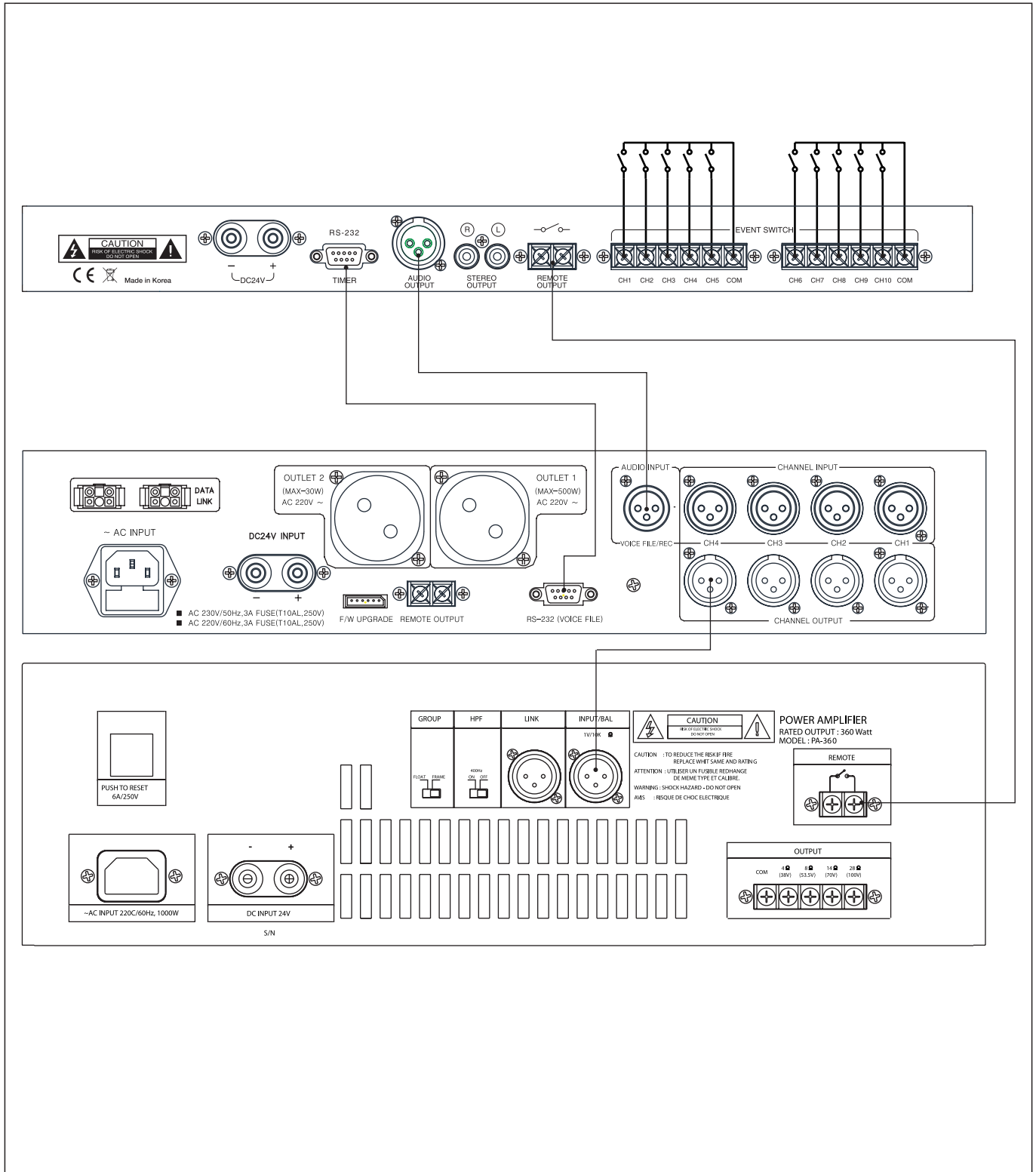
### 5. CONTACT POINT OF REMOTE OUTPUT SOCKET

Play - ON (Short), Finish - OFF (NC)

### 6. EVENT PLAYING SOCKET

The same function with on front, use for remote play

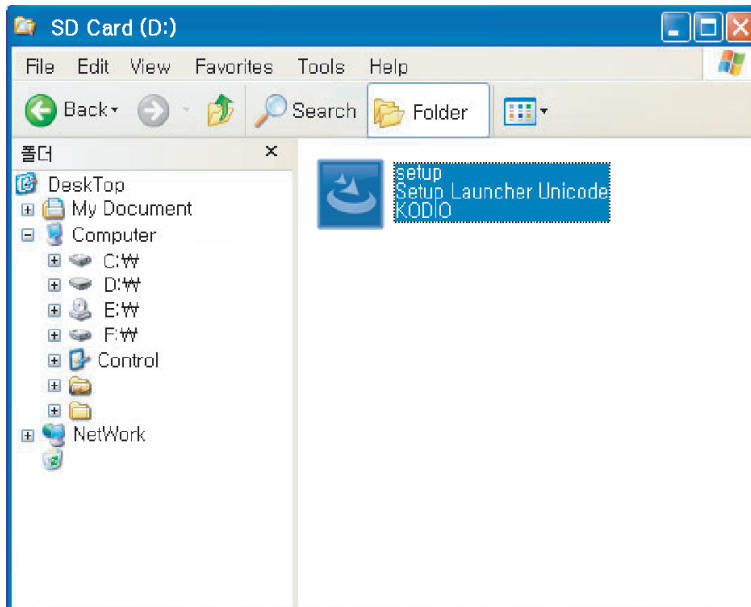
# Connection Diagram



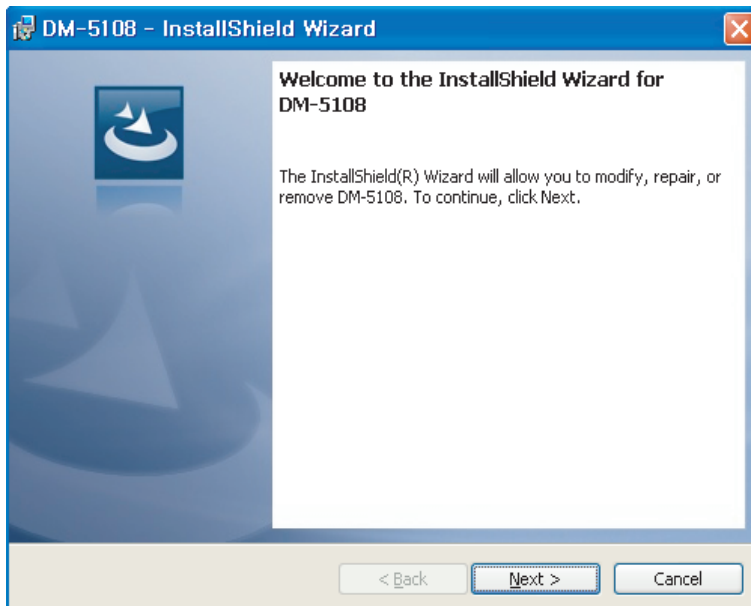
## Operation Software

### ■ Installation

1. Run "Set up .exe" in SD-card.

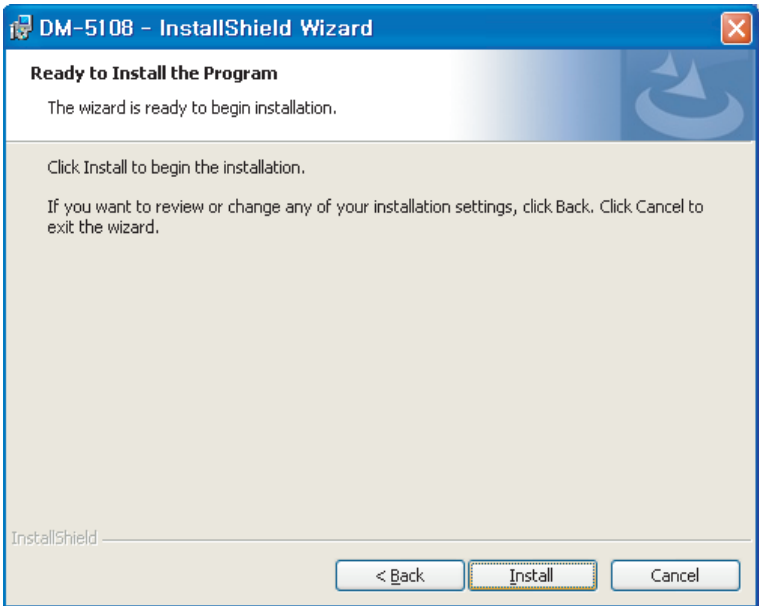


2. Click "Next".

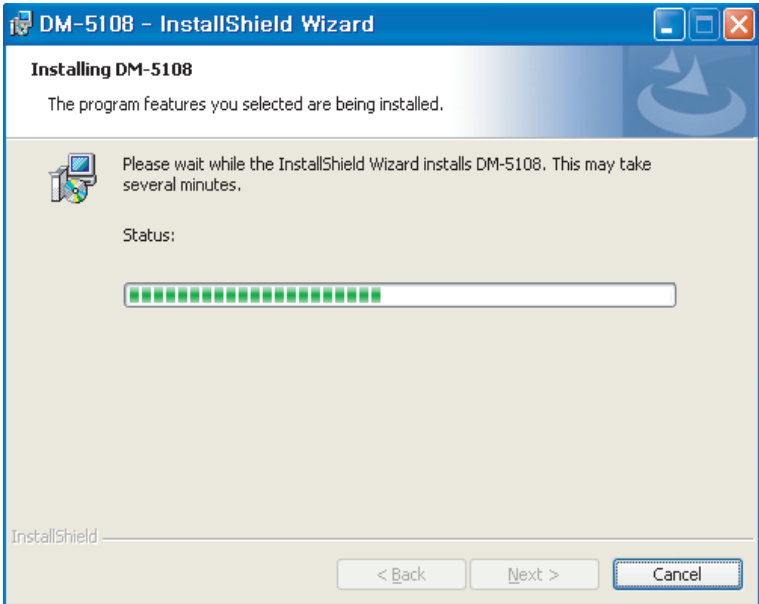




3. Click "Install".



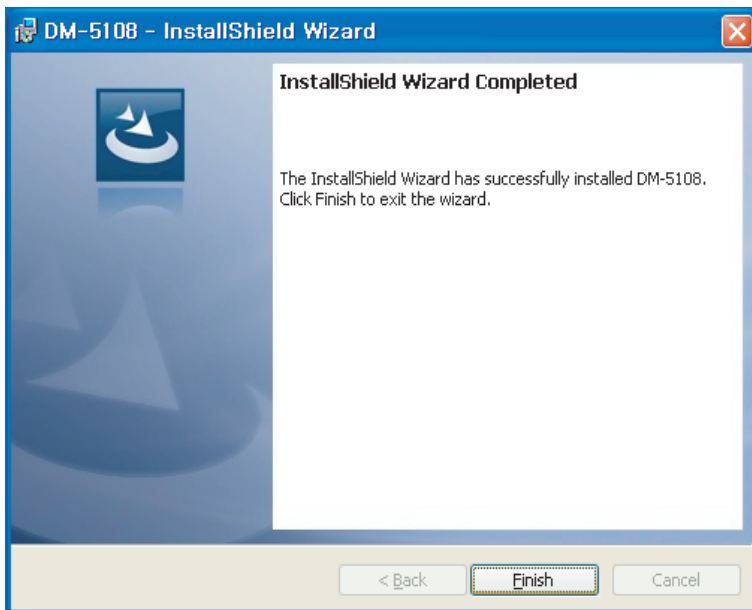
4. Wait for the installation is finished.



## Sound & Voice Player

---

5. Click "Finish".



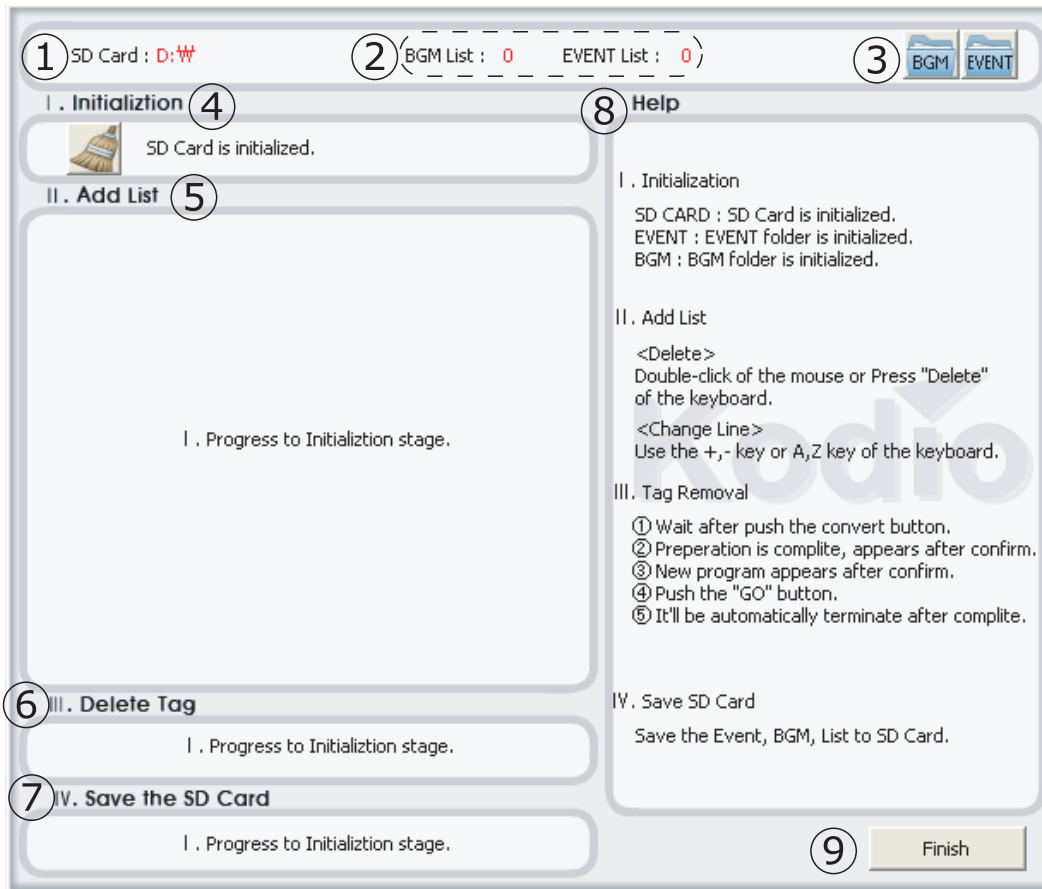
6. Run the Program

Location : Start ► Program ► KODIO ► DM-5108 ► DM-5108



Choose the location of SD-card and click the "Confirm" button.  
※ **You must choose the location of SD-card.**

## Description of Each part



- ① Shows the location SD-card.
  - ② Shows the number of files for each part.
  - ③ Shows each files information detail.
  - ④ I . Initialized : Initialize SD-card.
  - ⑤ II . Add List : Add and confirm the list.
  - ⑥ III . Delete Tag : Delete unnecessary information on MP3 files.
  - ⑦ IV . Save SD-card : Save SD-card that added list in [ II . Add the List]
  - ⑧ Help.
  - ⑨ Finish.
- ※ You must progress in order , otherwise you can't go to next step.

### Progress Way

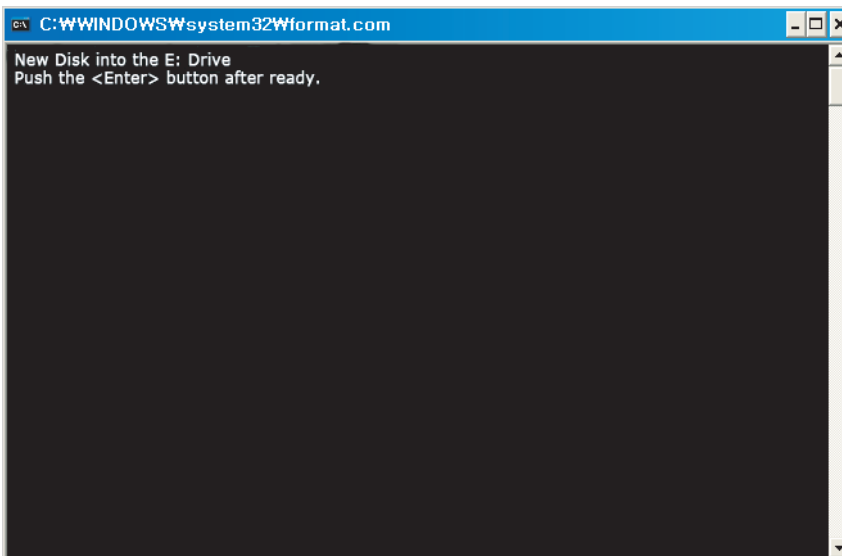
#### ■ Initialization

Initialize the whole SD-card to avoid any failure.

Click  Button



① SD-card : Initializing the whole SD-card (Recommended)

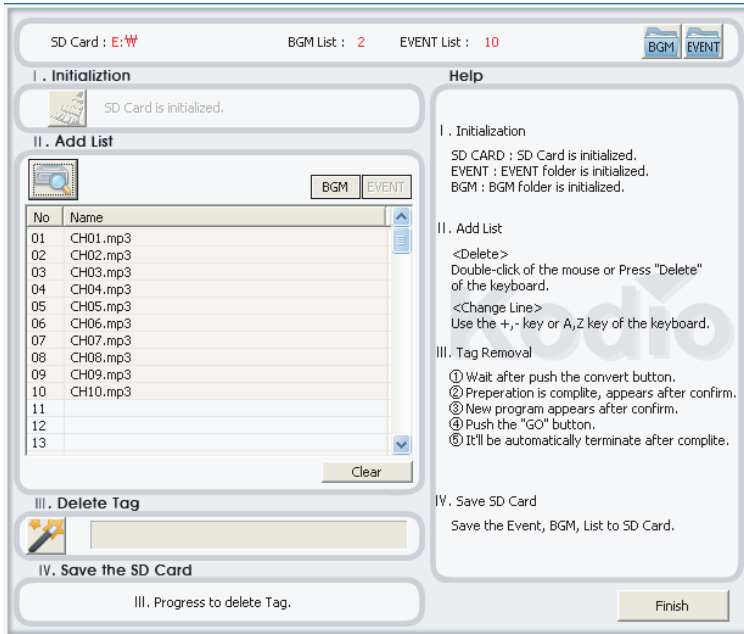



※Window disappear automatically.

- ② EVENT : Initializing EVENT file only.
- ③ BGM : Initializing BGM file only.
- ④ Confirm : Close initialization window.

## ■ Add the List

Choose the group to add(BGM or EVENT)



Click the  button, choose and add mp3 files.

<EVENT> : Using the button of CH1~CH10 in back and there is a sound source in each channels. You should change a sound source in this folder that has 1.mp3 ~10.mp3 files.

DPT-9602(Weekly Program Timer) user can add own sound sources of 11.mp3~99.mp3. Also, DPT-9602 (Weekly program Timer) can be interlocked.

**(\*The filename a sound source must be designate sequentially by number.)**

<BGM> : The folder which puts in a sound source when you pay by play button in front of goods.

Format of sound source is mp3 extention file with 8 digit in English .

Some of mp3 files can not be played because of it's own status.

It can be played in case of deleting ID3v1 and ID3v2 tag info of mp3 file.

**(\*BGM playing is repeat by order and 225 songs can be played.)**

The form of sound source is MP3 file and file name is changed and saved by order.

There are descripted detail.

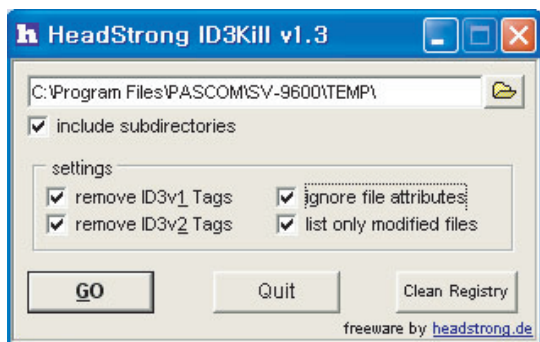
## Sound & Voice Player

### ■ Delete Tag

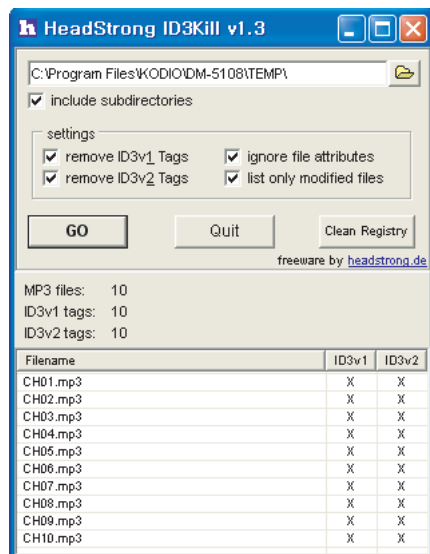
Song's information and others are saved each MP3 file.

Song source can't play according to tag information so, delete tag information.

After click "GO" button and click "Confirm" on the message then "headstrong id3kill v1.3" program will be displayed.



Click "GO" button then it progress automatically as finished as follow.



### Saving SD-card

Click "  ", and confirm guide message.

Remove SD card and Finish Program.

Saving speed may different to the number of files or type of SD card.

\* Window 7 : If program isn't progress , pls a program permissions compatibility issues.

# Specifications

## ■ ELECTRICAL FEATURES

- 1. Transmission System ----- 19200bps, RS232
- 2. Control Scope ----- DPT-9602(TIMER)
- 3. External Control ----- 1 Channel External Control (Using a point of contact)  
10 Channels External point of contact play
- 4. Display ----- FND, LED
- 5. Type of SD-Card can be read ----- SD, Micro SD - 4G byte(SD, HC)
- 6. Frequency Range ----- 20Hz ~20kHz
- 7. The sound source output ----- Stereo 1V( $\pm 100\text{mV}$ ) / Balance 1.2V ( $\pm 100\text{mV}$ )
- 8. S/N ----- Over the 80dB
- 9. T.H.D ----- Below the 0.01%

■ Power Supply ----- DC24V / 100mA

■ Net Weight ----- 2.2Kg

■ Demensions -----482(W) x 44(H) x 280(D)mm

## Memo





# Memo



